

Cutting Instructions for TriCounty Quilt Guild

2026 Block of the Month Mystery Quilt

Notes:

These cutting instructions are designed to use as much fabric from the cut of yardage as possible. Please make sure to refer to the cutting diagram for a visual on the most efficient use of each fabric required. Pay close attention to the smaller pieces. Some pieces of the WOF strips are used creatively to get the most use of the fabric and can be confusing if the diagram isn't followed. Most of the yardage requirements for each fabric include a couple of extra inches for wiggle room. The measurement given in inches is the ***minimum*** amount of fabric you could get by with if you cut very accurately. ***Fabric E is an exact amount and there is only one inch of wiggle room if you start with one yard of Background Fabric. You may want to use a slightly larger cut of fabric if you're concerned about cutting errors.***

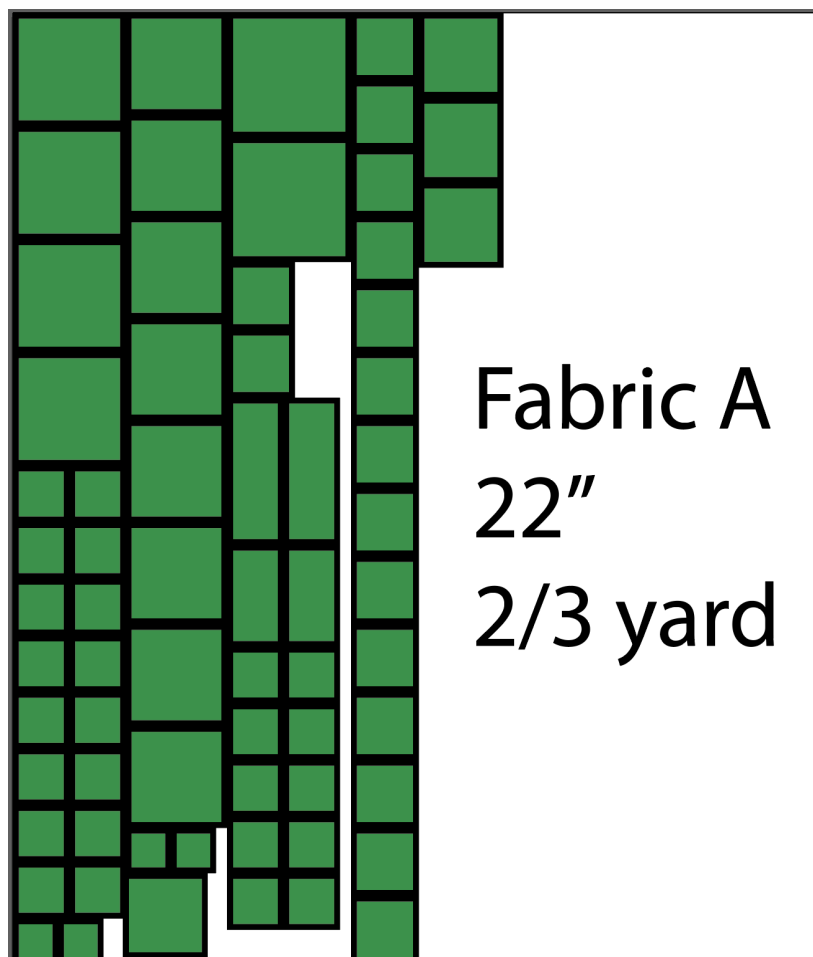
The cutting diagrams *are* to scale, however they were created to be used in conjunction with the cutting instructions, not on their own. Pay close attention to the smaller pieces. Some pieces of the WOF strips are used creatively to get the most use of the fabric and can be confusing if the diagram isn't followed.

Fabric A

$\frac{2}{3}$ yard or at least 22" x WOF

WOF Strip	Subcut into	Label
5"	(4) 5" squares	(2) as Block 1 (2) as Block 4
	(16) 2 ½" squares	(4) as Block 10 (12) as Block 11
4 ½"	(8) 4 ½" squares	(4) as Block 8 (4) as Block 10
	(1) 3 ¾" square	as Block 6

5 ½"	(2) 5 ½" squares	as Block 12
	Cut the remaining piece into (2) long 2 ½" wide strips, then cut	
	(2) 2 ½" x 6 ½" rectangles	as Block 2
	(2) 2 ½" x 4 ½" rectangles	as Block 2
	(14) 2 ½" squares	(2) as Block 2 (8) as Block 12 (4) as Block 3
3"	(14) 3" squares	as Block 5
3 ¾"	(3) 3 ¾" squares	as Block 6
	(2) 3" squares	as Block 5

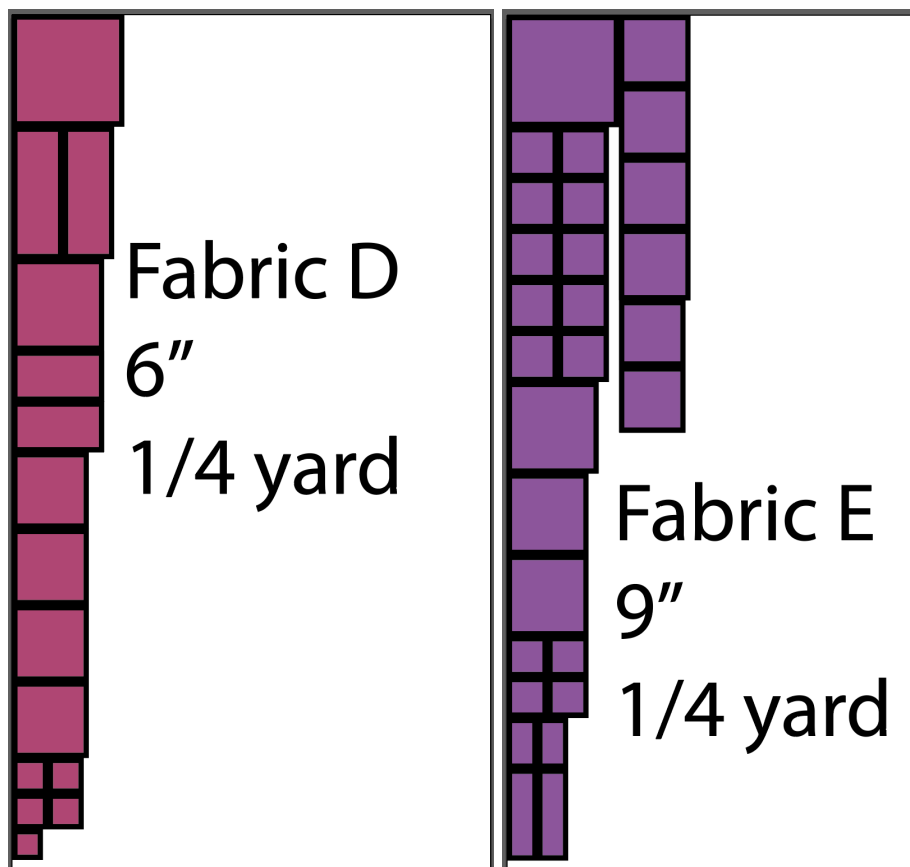
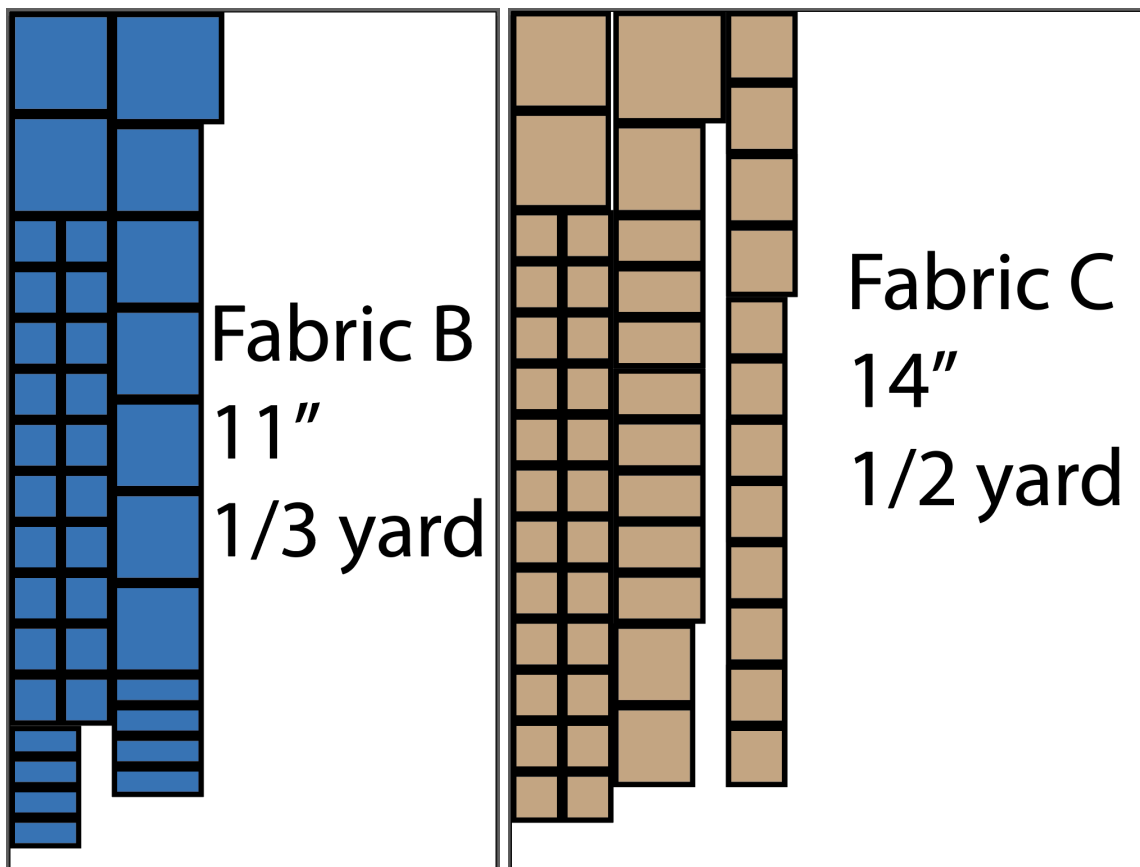


Fabric B
 $\frac{1}{3}$ yard or at least 11" x WOF

WOF Strip	Subcut into	Label
5"	(2) 5" squares	as Block 1
	(20) 2 $\frac{1}{2}$ " squares	(8) as Block 4 (12) as Block 11
	(4) 4 $\frac{1}{2}$ " x 1 $\frac{1}{2}$ " rectangles	as Block 11
5 $\frac{1}{2}$"	(1) 5 $\frac{1}{2}$ " square	as Block 8
	(6) 4 $\frac{1}{2}$ " squares	(2) as Block 2 (4) as Block 3
	(4) 3 $\frac{1}{2}$ " x 1 $\frac{1}{2}$ " rectangles	as Block 11

Fabric C
 $\frac{1}{2}$ yard or at least 14" x WOF

WOF Strip	Subcut into	Label
5"	(2) 4 $\frac{7}{8}$ " squares	as Block 3
	(24) 2 $\frac{1}{2}$ " squares	(4) as Block 9 (12) as Block 10 (8) as Block 12
5 $\frac{1}{2}$"	(1) 5 $\frac{1}{2}$ " square	as Block 8
	(1) 4 $\frac{1}{2}$ " square	as Block 1
	(8) 4 $\frac{1}{2}$ " x 2 $\frac{1}{2}$ " rectangles	as Block 9
	(2) 4" squares	as Block 7
3 $\frac{1}{2}$"	(4) 3 $\frac{1}{2}$ " squares	as Block 7
	(8) 3" squares	as Block 5



Fabric D
 $\frac{1}{4}$ yard or at least 6" x WOF

WOF Strip	Subcut into	Label
5 $\frac{1}{2}$"	(1) 5 $\frac{1}{2}$ " square	as Block 8
	(2) 2 $\frac{1}{2}$ " x 6 $\frac{1}{2}$ " rectangles	as Block 2
	(1) 4 $\frac{1}{2}$ " square	as Block 10
	(2) 4 $\frac{1}{2}$ " x 2 $\frac{1}{2}$ " rectangles	as Block 2
	(4) 3 $\frac{3}{4}$ " squares	as Block 6
	(4) 1 $\frac{3}{4}$ " squares	as Block 6
	(1) 1 $\frac{1}{2}$ " square	as Block 6

Fabric E
 $\frac{1}{3}$ yard or at least 9" x WOF
This is EXACTLY 9" of fabric. Be extra careful when cutting.

WOF Strip	Subcut into	Label
5 $\frac{1}{2}$"	(1) 5 $\frac{1}{2}$ " square	as Block 8
	(10) 2 $\frac{1}{2}$ " squares	(2) as Block 2 (8) as Block 3
	(1) 4 $\frac{1}{2}$ " square	as Block 3
	(2) 4" squares	as Block 7
	(4) 2" squares	as Block 4
	(2) 1 $\frac{1}{2}$ " x 2 $\frac{1}{2}$ " rectangles	as Block 12
	(2) 1 $\frac{1}{2}$ " x 4 $\frac{1}{2}$ " rectangles	as Block 12
3 $\frac{1}{2}$"	(4) 3 $\frac{1}{2}$ " squares	as Block 7
	(2) 3 $\frac{1}{4}$ " squares	as Block 4

Background Fabric
at least 1 yard x WOF

This leaves you with only 1" of wiggle room so you may want to use a slightly larger cut of fabric. Follow the Cutting Diagram to see most efficient cutting of the fabric

WOF Strip	Subcut into	Label
5 ½"	(4) 5 ½" squares	(1) as Block 8 (3) as Block 12
	(5) 2 ½" squares	(4) as Block 2 (1) as Block 5
	(4) 2 ⅞" squares	as Block 3
	(4) 2 ½" x 1 ½" rectangles	as Block 11
2 ½"	(16) 2 ½" squares	(3) as Block 5 (13) as Block 9
2 ½"	(16) 2 ½" squares	as Block 10
5"	(6) 5" squares	(4) as Block 1 (2) as Block 4
	(8) 2 ½" squares	(7) as Block 9 (1) as Block 12
4 ½"	(9) 4 ½" squares	(4) as Block 4 (4) as Block 10 (1) as Block 11
4 ½"	(1) 4 ½" square	as Block 9
	(8) 4 ½" x 2 ½" rectangles	(4) as Block 9 (4) as Block 11
	(4) 4" squares	as Block 7
3 ½"	(4) 3 ½" x 6 ½" rectangles	as Block 7
	(4) 3 ½" x 1 ½" rectangles	as Block 11
	(4) 3 ¼" x 2" rectangles	as Block 6

3"	(8) 3" squares	as Block 5
	(4) 1 ½" squares	as Block 8
	(4) 1 ½" x 6" rectangles	as Block 6
3 ⅞"	(4) 3 ¾" squares	as Block 6
	(4) 2" x 1 ¾" rectangles	as Block 6
	(1) 3 ⅜" square	as Block 4

